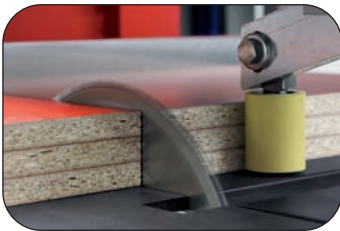


>>NEWNESS



PANHANS S45 Speed / S45 Power Speed

Success with PANHANS cut-to-size saws



Multifunctional through mitre cutting

Benefits for you:

- _ Cost reduction of the manufactured parts
- _ Highest precision up to a cutting length of 5800 mm
- _ Flexible and economical work process through innovative machine technology

speedy – powerful – multifunctional



ECO-Mode



AWB – all from one supplier

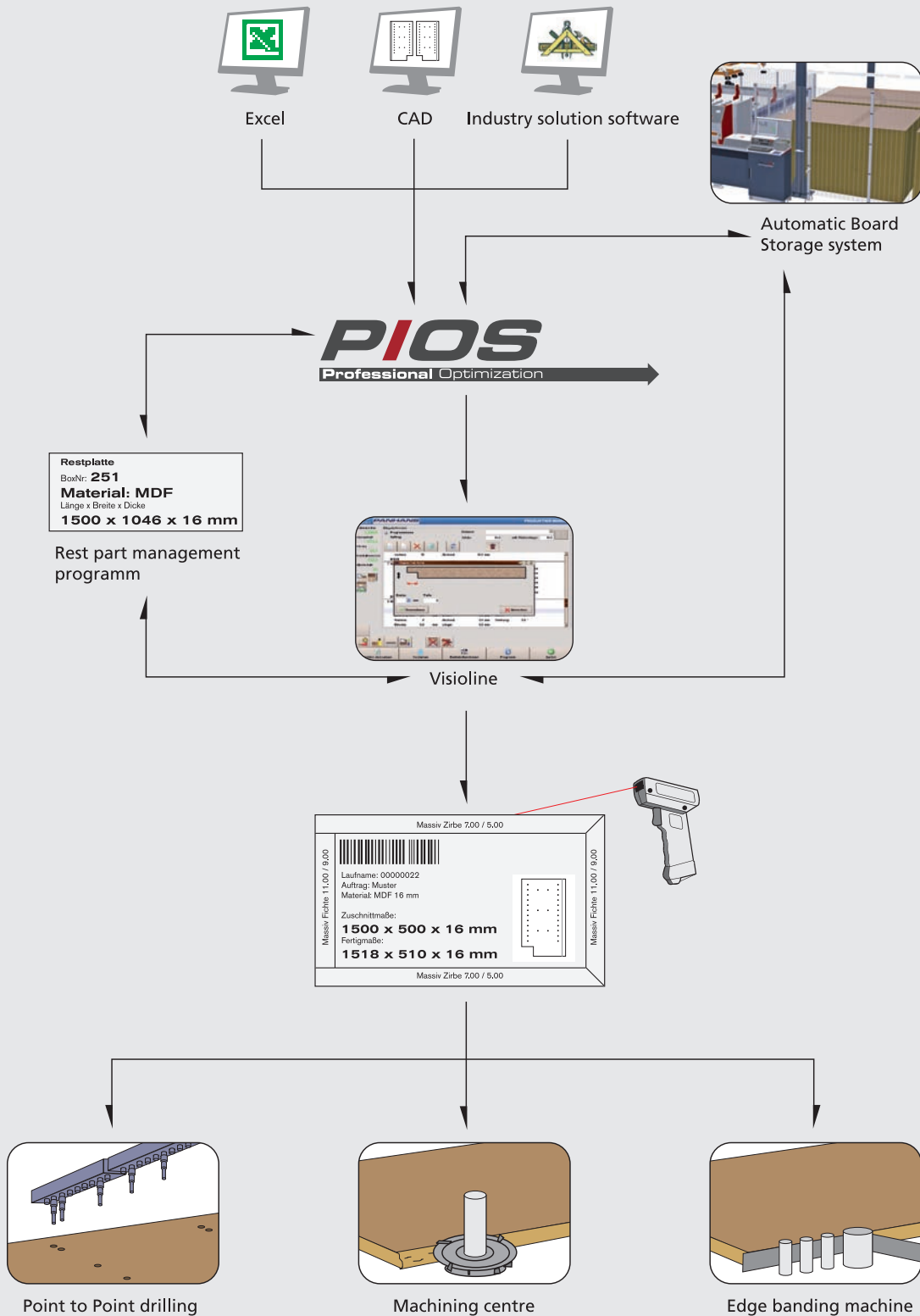
Member of **schelling** Group

PANHANS

AWB ^A

AWB Maschinenbau GmbH

Production flow-chart

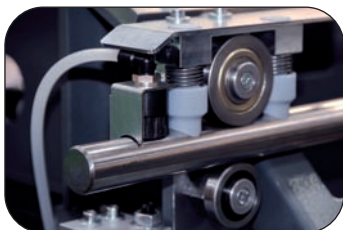


PANHANS S45 Speed and S45 Power Speed



Air flotation table – integrated into machine table

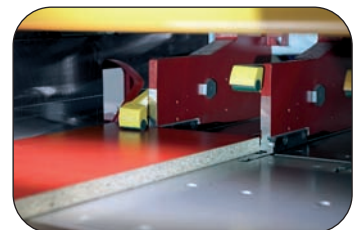
The new generation of beam saws – always one step ahead with the new **PANHANS S45**! The innovative S45 revolutionises the workflow in the cut-to-size process. All cutting processes inclusive of mitre cutting of “lot size 1” are done by one operator on the one saw – only PANHANS S45 offers you this versatility and precision!



Automatic cleaning system of precision guiding for saw aggregate



Saw aggregate 0 to 46 degrees pivoted



Intelligent clamps activation – no material damage

Standard Equipment:



- _ Precision guiding for saw aggregate – 10 years warranty for guiding rods
- _ Automatic cleaning of saw aggregate
- _ Electronic controlled short stroke of pressure beam
- _ APA power lock system for saw blade changing
- _ Automatic measuring of the saw blade
- _ Cutting length- and cutting width sensor
- _ Cutting height adjustment in 4 steps
- _ Monitoring function for panel thickness
- _ Saw aggregate 0 to 46 degrees pivoted
- _ Automatic positioning of pressure beam to panel thickness and mitre
- _ Side pressure device
- _ Work room illumination
- _ Window in pressure beam cover
- _ Air cushion table fixed and moveable
- _ Parking position for air cushion table for better material handling
- _ Remote maintenance
- _ Maintenance note and visual maintenance support
- _ Ergonomic working height
- _ Smallest required space
- _ Twofold measuring system on pusher fence
- _ Industry PC operating system Windows XP embedded
- _ Visual guiding of operator VISIOLINE
- _ 19 inch colour monitor
- _ Depositing area on operating panel
- _ ECO mode

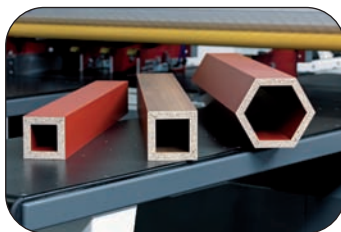


ECO-Mode

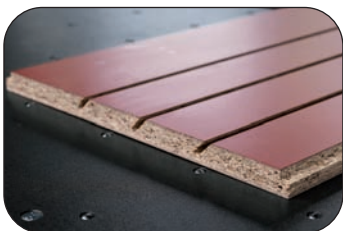
Save energy with our intelligent adjustable standby-mode



Automatic formatting device for overlay material



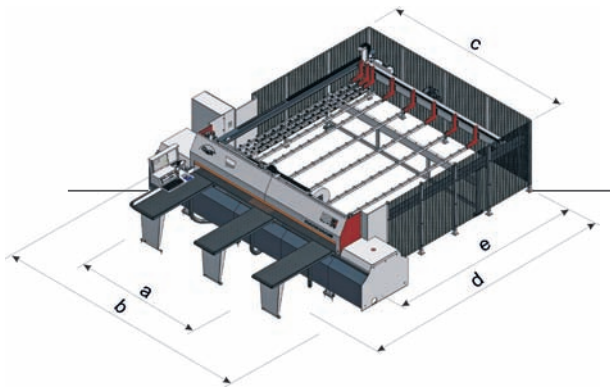
Sample applications – produced by the multifunctional beam saw PANHANS S45



Option for PANHANS S45 – Grooving program (mitre groove)

Options:

- + Window cutting
- + Variable Saw Motor speed
- + Postforming
- + Mitre cut facility
- + Label Printer
- + Format facility
- + Grooving
- + Additional clamps
- + Intelligent clamp activation
- + Variable pressure adjustment clamp
- + PIOS Professional Optimization
- + Interface for Boards Storage systems
- + and much more...



Technical Data:

dimensions:	S45 Speed	S45 Speed	
	S45 Power Speed	S45 Power Speed	S45 Power Speed
cutting length/cutting width	3200 / 3200 mm	4200 / 4200 mm	5800 / 5800 mm
a	3210	4210	5810
b	5335	6335	7935
c	3875	4880	6523
d	6364	7371	9101
e	4119	5126	6856
dimensions – mm			
a	126,378	165,748	228,740
b	210,039	249,409	312,402
c	152,559	192,126	256,811
d	250,551	290,197	358,307
e	162,165	201,811	269,921
dimensions – inch			
weight:	4800 kg/10560 lbs	6300 kg/13860 lbs	7700 kg/16940 lbs

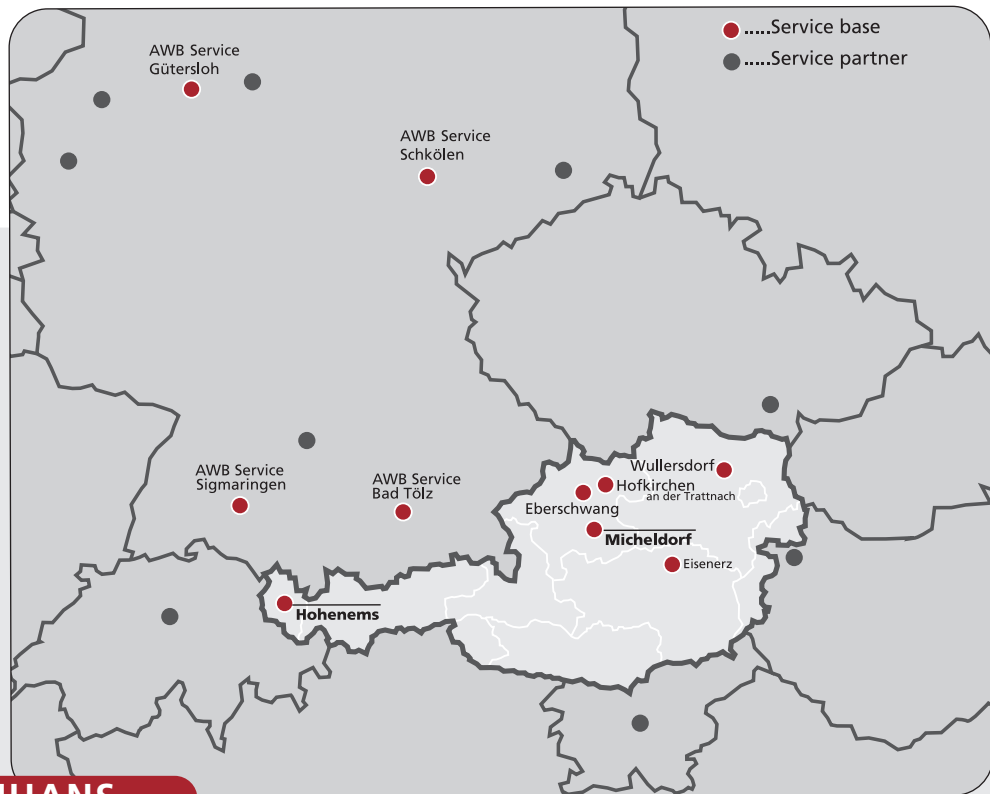
Machine Data:

	S45 Speed	S45 Power Speed	
MAIN SAW			feed speed
motor power	14 kW / 19 PS	18,5 kW / 25 PS	saw aggregate
saw blade diameter	350 mm / 13,180"	400 mm / 15,748"	forward
emerge of saw blade	72 mm / 2,835"	97 mm / 3,819"	backward
SCORING SAW			pusher fence
saw blade diameter	180 mm / 7,087"	180 mm / 7,087"	forward (in EU-countries 25 m/min / 82,02 ft/min)
opening of clamps			backward
	84 mm / 3,307"	104 mm / 4,095"	

Connection Values:

	S45 Speed	S45 Power Speed		S45 Speed	S45 Power Speed
ELECTRICAL:					
operating voltage	3x400V +/-10%	3x400V +/-10%			
nominal power	25 kW	29 kW	pre fuse	50 A	63 A
nominal current	45 A	52 A	frequency	50 Hz	50 Hz
PNEUMATICAL:					
operating pressure	constant 6 bar		air consumption	140 l/min	
EXTRACTION:					
extraction below	Ø 140 mm		machine resistance	1800 Pa	
extraction top	Ø 100 mm		volume flow rate (at 1x140 mm below and 2x100 mm top)	3400 m³/h	
air speed	30 m/s		for every additional extraction connection at the pressure beam	850 m³/h	





Service PANHANS

Service is available anywhere and anytime through **numerous locations worldwide!** We guarantee you quick and competent support through our qualified and experienced Technicians. AWB additionally guarantee service and spares via partner companies in Great Britain, Benelux, Scandinavia, Poland, Croatia, Turkey, Italy, Bulgaria, Baltic, and more. Find your Contact Partner on www.awb-maschinen.at.

Further AWB Service Centres in Europe:

- _AWB Service, Gütersloh, Germany
- _AWB Service, Schkölen, Germany
- _AW Utilaje Austria SRL, Timisoara, Romania
- _Schelling AWB, Moskau, Russia

Company profile

Wilfried Amann and his Team offer with their motto **"From Vision to Praxis"** high quality future solutions for your success!

- _ **Engineering – complete solutions for your individual Production processes**
- _ **Single line machines and system solutions for the individual joiner and medium size business**
- _ **A unique service package**

A Team of highly qualified Technicians and Project Managers advise and take care of our customers from a business idea right through to automation and complete production processes!

Head office Upper Austria:
 AWB Maschinenbau GmbH
 Kreuzfeld 2
 4563 Micheldorf
 T. +43 7582 61361
 F. +43 7582 61361-41
 E. office@awb-maschinen.at

Office Vorarlberg:
 AWB Maschinenbau GmbH
 Graf Maximilian Str. 16
 6845 Hohenems
 T. +43 5576 43055
 F. +43 5576 43055-10
 E. office@awb.co.at
www.awb-maschinen.at

contact person / sales representative

AWB_11_05

Member of **schelling** Group
PANHANS

AWB^A
 AWB Maschinenbau GmbH

*The illustrations also show special accessories which are not included in the standard scope of supply. Basic equipment according to valid price list. Subject to design changes and size alterations.