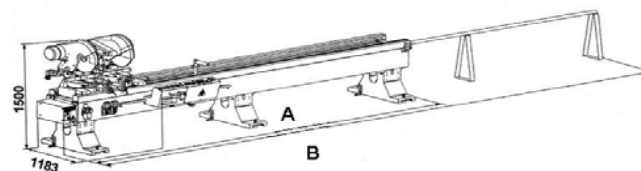


MOXIE

Double head sawing machine with Ø 400 mm descendant blade and manual cutting angle control.



Working cut	A(mm)	B*(mm)	KG
m. 4	4842	7640	700
m. 6	6842	8640	867

* B machine equipped with flow binary for roller table with mobile head (optional)

MOXIE

Double head sawing machine with Ø 400 mm descendant blade and manual cutting angle control.

Technical Specifications

Cutting angles: rotation from 45° outwards to 45° inwards, angle from 45° outwards to 90°_ Variable Angle

N° 2 tungsten carbide Ø 400 saw blades

Oleopneumatic advance of tungsten carbide blades (adjustable blade exit speed - quick return - automatic feed with profile rapid approach)

Three phase motors 3 HP (2,208 Kw) - 2800 rpm. eurotension 230/400V- 50Hz; 275/480V - 60 Hz

Belt drive motor-blades

Cutting lubrication by atomiser

Maximum cut between the two heads: 4000 o 6000 mm depending on version supplied

Minimum cut between the two heads: see the table

First head fixed, second head mobile with automatic positioning along high precision linear guides by means of recirculating ball blocks

Pneumatic vices

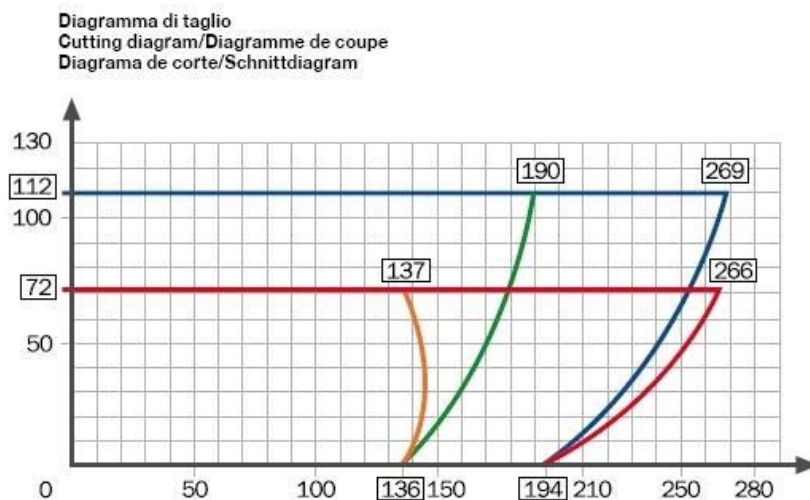
Set up for forced evacuation of chips and fumes

Working pressure: 7 bar

MOXIE

Double head sawing machine with Ø 400 mm descendant blade and manual cutting angle control.

Cutting diagram



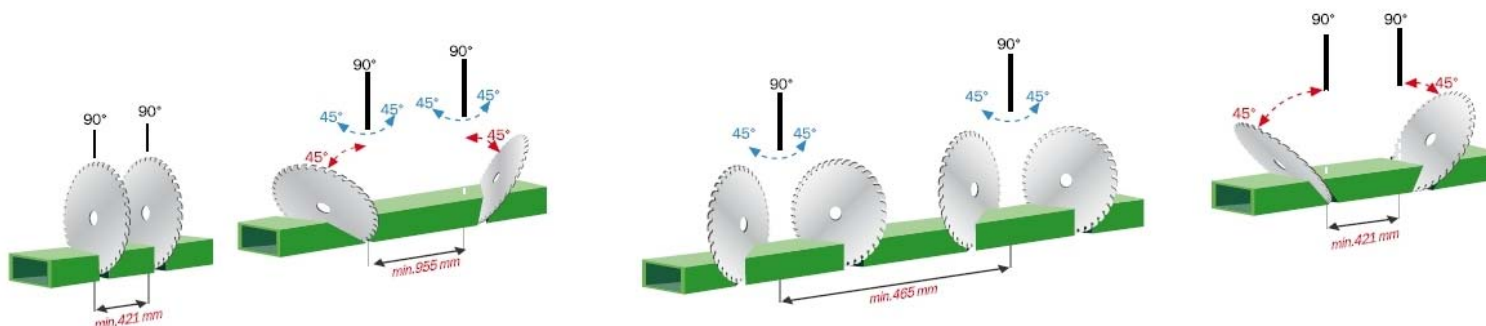
■ Testa a 90°
■ Testa ruotata a 45° interni e/o a 45° esterni
■ Testa inclinata a 45° esterni
■ Testa inclinata a 45° esterni e ruotata a 45° esterni

■ Cabezal a 90°
■ Cabezal girado a 45° interiores y/o a 45° exteriores
■ Cabezal inclinado a 45° exteriores
■ Cabezal inclinado a 45° exteriores y girado a 45° exteriores

■ 90° head
■ Head rotated to 45° inwards and/or to 45° outwards
■ Head tilted to 45° outwards
■ Head tilted to 45° outwards and rotated to 45° outwards

■ Kopf auf 90°
■ Kopf gedreht auf 45° innen und/oder 45° aussen
■ Kopf geneigt auf 45° aussen
■ Kopf geneigt auf 45° aussen und gedreht auf 45° aussen

■ Tête à 90°
■ Tête tournée à 45° internes et/ou à 45° externes
■ Tête inclinée à 45° externes
■ Tête inclinée à 45° externes et tournée à 45° externes



MOXIE

Double head sawing machine with Ø 400 mm descendant blade and manual cutting angle control.

Standard accessories

N	Description
2	Ø 400 mm tungsten carbide saw blades
1	Cutting area guard kit
	Horizontal vices

Optionals

Description

Additional charge for special voltage and cycles
(Standard motor: 230/400V three-phase 50Hz and 110/230V single phase 50Hz)

Additional charge for plant version UL-CSA
(The additional charge includes the plant with cables and special components/measurement unit in inches)

MOXIE

Double head sawing machine with Ø 400 mm descendant blade and manual cutting angle control.

MOXIE

Double head sawing machine with Ø 400 mm descendant blade and manual cutting angle control.

Optionals

Description	MOXIE	MOXIE V	MOXIE M
Horizontal vice.(no.1)	<input checked="" type="checkbox"/>	<input checked="" type="checkbox"/>	<input checked="" type="checkbox"/>
Vertical vice. (no.1)	<input checked="" type="checkbox"/>	<input checked="" type="checkbox"/>	<input checked="" type="checkbox"/>
Intermediate manual profile support.	<input checked="" type="checkbox"/>	<input checked="" type="checkbox"/>	
1st Receding intermediate profile support.			<input checked="" type="checkbox"/>
2 nd Receding intermediate profile support.			<input checked="" type="checkbox"/>
Length stop for minimum cut (to be ordered with vertical vice PR 24399)	<input checked="" type="checkbox"/>	<input checked="" type="checkbox"/>	<input checked="" type="checkbox"/>
Mechanical length stop for “v” cuts.(for PVC)	<input checked="" type="checkbox"/>	<input checked="" type="checkbox"/>	<input checked="" type="checkbox"/>
Mobile head roller table - 3 Mt. (only for 4 Mt. cutting length)	<input checked="" type="checkbox"/>	<input checked="" type="checkbox"/>	
Mobile head roller table - 3 Mt. (only for 6 Mt. cutting length)	<input checked="" type="checkbox"/>	<input checked="" type="checkbox"/>	
Mobile head roller table - 3 Mt. (only for 4 Mt. cutting length)			<input checked="" type="checkbox"/>
Mobile head roller table 3 Mt. (only cutting length Mt. 6)			<input checked="" type="checkbox"/>
Fixed head roller table - 3 Mt. - with vertical rolls.	<input checked="" type="checkbox"/>	<input checked="" type="checkbox"/>	<input checked="" type="checkbox"/>
Fixed head roller table with vertical rolls, 4,2 Mt.	<input checked="" type="checkbox"/>	<input checked="" type="checkbox"/>	<input checked="" type="checkbox"/>
Micro-drop pure oil blade lubrication system.	<input checked="" type="checkbox"/>	<input checked="" type="checkbox"/>	<input checked="" type="checkbox"/>

Optionals: SOFTWARE

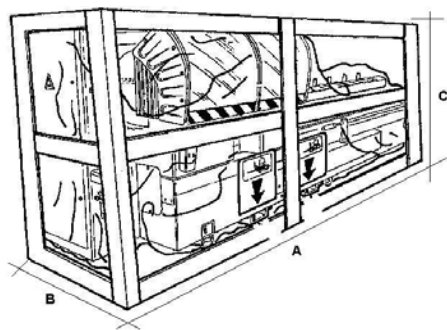
Description	MOXIE	MOXIE V	MOXIE M
Software licence for formulas and typologies.			<input checked="" type="checkbox"/>

MOXIE

Double head sawing machine with Ø 400 mm descendant blade and manual cutting angle control.

Optionals: PACKING

Description	MOXIE	MOXIE V	MOXIE M
Crate packing - 4000 mm	<input checked="" type="checkbox"/>	<input checked="" type="checkbox"/>	<input checked="" type="checkbox"/>
Crate packing - 6000 mm	<input checked="" type="checkbox"/>	<input checked="" type="checkbox"/>	<input checked="" type="checkbox"/>



Working cut	A (mm)	B (mm)	C (mm)	KG
m. 4	6300	1700	1800	158
m. 6	8300	1700	1800	225

MOXIE

Double head sawing machine with Ø 400 mm descendant blade and manual cutting angle control.



The specifications and illustrations in this technical sheet are only guideline, FomIndustrie therefore reserves the right to make any modifications it deems necessary for technical or commercial reasons at any time and without prior notification.

MOXIE

Double head sawing machine with Ø 400 mm descendant blade and manual cutting angle control.

Fom Industrie Srl
Aluminium & PVC Working Machinery

47841 Cattolica (RN)
via Mercadante, 85
Italia

Tel. +39.0541.832.611
Fax. +39.0541.832.615

www.fomindustrie.com
www.fom-group.com
info@fomindustrie.com